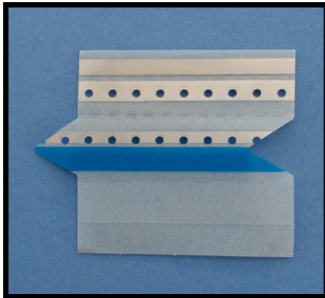


Toolless Double Edge Splice Tape

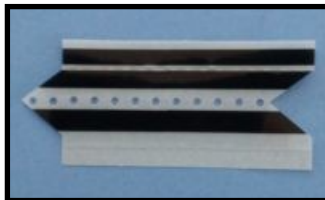
Silver & Blue for Metal Detecting and No Splice Detection Feeders



Toolless Silver and Blue Double Edge Splice Tapes can be used with all metal sensing smart feeders, and any feeders without splice detection. They can be used on paper or plastic tape, punched or formed pockets, and any cover tape. They are primarily used for splicing on-the-fly without removing a tape feeder from the pick and place machine. It is recommended that these splices be applied

using either a finger jig or foldable jig. Pre-punched holes in the hard plastic cover and splice tape allows for quick and easy alignment. These splice tapes are available in 8-72mm widths, and wider on request.

Black for Emitter/Receiver Detecting Smart Feeders



Toolless Black Double Edge Splice Tapes can be used with all emitter/receiver sensing smart feeders. They can be used on paper or plastic tape, punched or formed pockets, and any cover tape. They are primarily used for splicing on-the-fly without removing a

tape feeder from the pick and place machine. It is recommended that these splices be applied using either a finger jig or foldable jig. Pre-punched holes in the hard plastic cover and splice tape allows for quick and easy alignment. These splice tapes are available in 8-72mm widths, and wider on request.

SMART SPLICE

INNOVATIVE TAPE SPLICING SOLUTIONS MEET UNSURPASSED CUSTOMER SERVICE