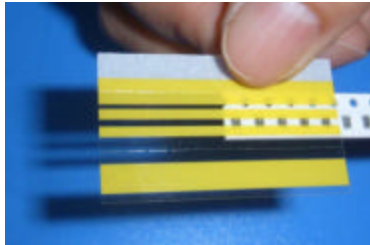
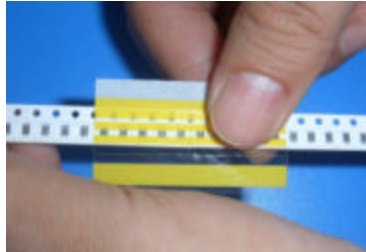


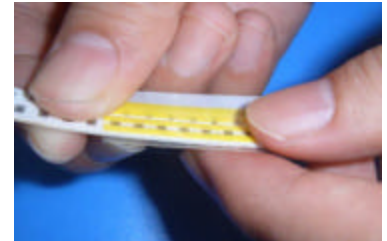
## Application Instructions



**STEP 1:** Remove paper liner and place splice tape on pre-cut tape using reference line.



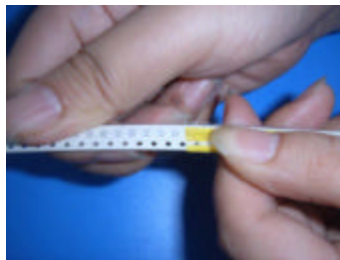
**STEP 2:** Align second pre-cut tape onto splice tape using reference line.



**STEP 3:** Fold splice tape down around edge of carrier tape.



**STEP 4:** Peel off remaining paper liner from reference line tape.



**STEP 5:** Fold reference line side of splice tape over carrier tape and adhere to bottom side.



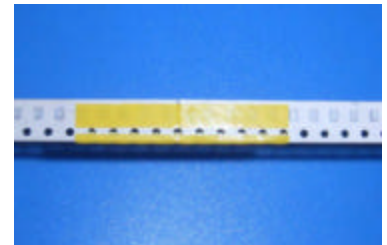
**STEP 6:** Adhere cover tape strip of splice tape to bottom cover tape.



**STEP 7:** Peel off remaining hard plastic cover from splice tape.



**TOP VIEW**  
Finished Splice



**BOTTOM VIEW**  
Finished Splice